

FARMERS ALLOY FABRICATING, INC

When fabrication has to be right...right now!





100 years of
dedication
to quality
and service.





- ***In January 2020 we relocated ALL operations to our highway 146 location*** This will allow us to provide faster and better response and efficiency for our local customer base
- 100 years of heat and pressure have fire formed us into the ultimate “*leather man tool*” for refineries, chemical, and power plants.
- Consistent quality
- Focused on results
- Reliable service
- We continue to modernize, and with sustainable growth, conservatively upgrade our business.

Who do we
work with?
...to name a
few...

- Exxon
- Marathon
- BP
- Marathon
- General Electric
- Lubrizol
- Dow
- INEOS
- RPS
- Valero
- Koch Industries
- KBR
- Kiewit
- Shell
- Lucite
- Covestro
- Rohm and Haas
- Baker Hughes
- Denora
- Lyondell Basell



Electrical

- Buss bar fabrication
- Junction box pre-terminated.
- Motor starter rack, with starters and disconnects.
- Complete pump skid assembly.
- Glastic fabrication in sheet ,channel, or angle.



Electrical

Buss bar



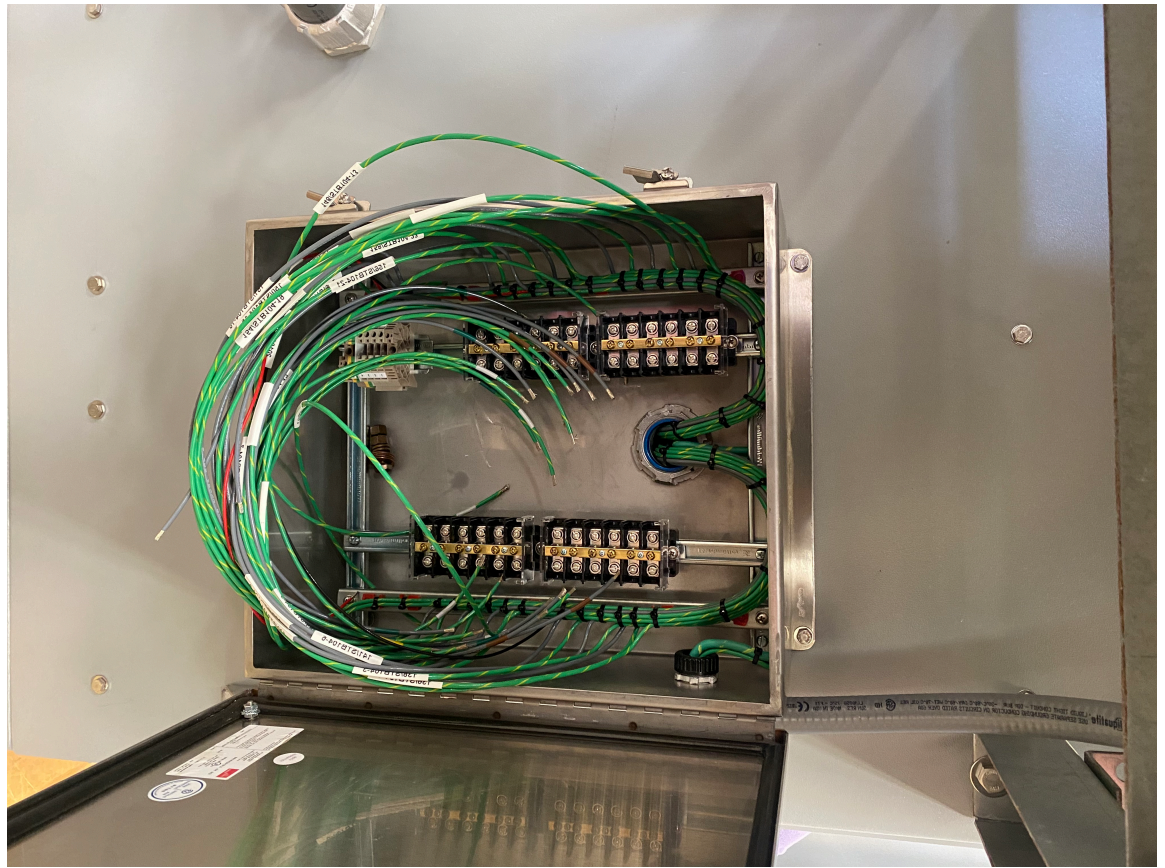


Special projects

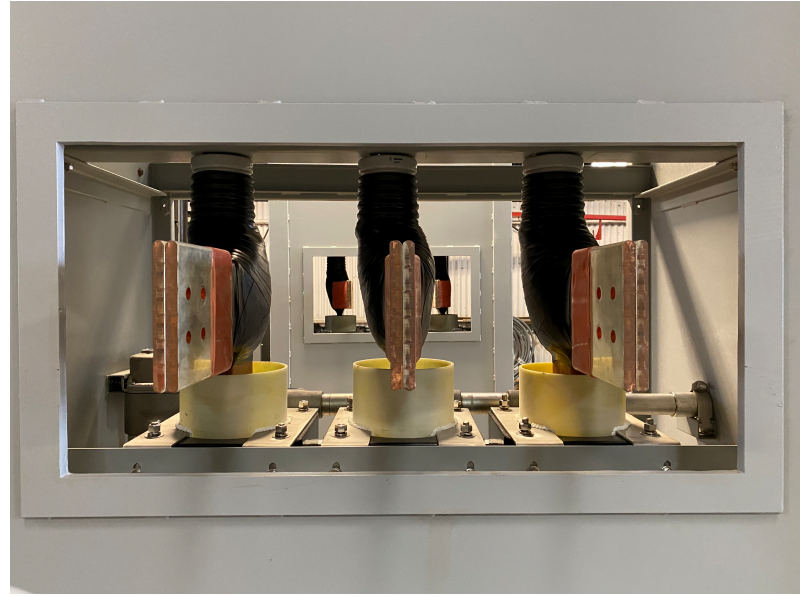


Repairs





Refurbished



Refurbished

What can we build
for you?

Call us today and
we're on it!



www.farmerscopper.com

...AND please check
out our copper and
brass metal service
centers...



Farmers Copper

FC San Antonio

